

# Rethinking Education for a Changing Planet



University of Hawai'i at Mānoa  
Architecture Auditorium  
Thursday, October 13, 2016 5:30pm

Featuring: Erik Assadourian (WorldWatch Institute);  
Patricia Espiritu Halagao (UHM College of Education);  
Buffy Cushman-Patz (SEEQS); Matthew K. Lynch (UH  
Sustainability Coordinator).

Sponsored by: Office of the Vice Chancellor for Academic Affairs, Office  
of Sustainability, Office of the Vice Chancellor for Research,  
Department of Natural Resources and Environmental Management,  
Department of Political Science, and the Watada Lecture Fund.

# RETHINKING EDUCATION FOR A CHANGING PLANET

How do we prepare students of different levels and backgrounds for the coming global changes we are already experiencing? The panel “Rethinking Education for a Changing Planet” explores this question by bringing together experts and educators tackling this issue. Beyond working to slow or reverse such changes, students will need to learn to adapt and respond to rapid changes on our dynamic earth. By embedding sustainability education in an earth-centered and place-based approach, students can learn concretely the challenges and opportunities to shape the future.



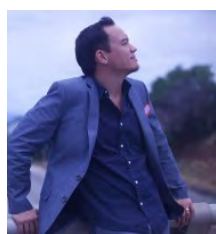
**Erik Assadourian** is senior fellow at the WorldWatch Institute and leads their current initiative on Earth Education. He has studied cultural change, consumerism, sustainability education, economic degrowth, ecological ethics, corporate responsibility, and sustainable communities over the past 15 years.



**Patricia Halagao Espiritu** is an Associate Professor in Curriculum Studies at the University of Hawai‘i at Mānoa, College of Education. She was recently awarded the University of Hawai‘i Board of Regents Medal for Excellence in Teaching. Halagao has helped coordinate education programming for the Hokulea’s worldwide voyage.



**Buffy Cushman-Patz**, University of Hawai‘i alum and founder of SEEQS (School for Examining Essential Questions of Sustainability) has explored teaching and learning through the lenses of theory, policy, leadership, and through first-hand experiences as a teacher in both conventional and unconventional settings.



**Matthew K. Lynch** is the System Sustainability Coordinator for the ten campuses of the University of Hawai‘i. He is also founder of the Honolulu based nonprofit Asia-Pacific Center for Regenerative Design, and serves on the Board of Directors for Kahumana Organic Farm and Slow Food Oahu, and the Sustainability Measures Project Co-Chair for the State of Hawai‘i Sustainability Dashboard.

The panel discussion will be held on Thursday, October 13 at 5:30pm at 2410 Campus Road, Honolulu, HI 96822, the Architecture Auditorium of the Hawai‘i at Mānoa. The event is free and open to the public.

*The event is made possible through the generous support of the University of Hawai‘i at Mānoa Office of the Vice Chancellor of Academic Affairs, the Office of the Vice Chancellor of Research, the Department of Political Science, the Department of Natural Resources and Environmental Management, and the Watada Lecture Fund.*